



British Embassy
Madrid

BTOM ALL- STAKEHOLDERS MEETING

Short presentation

19th January 2024

Alexandre Lado

Contact: alexandre.lado@fcdo.co.uk



- 1. BTOM lines: new UK model**
- 2. Timeline and requirements**
- 3. Engagement and resources**





1. BTOM lines: new UK model

The **BTOM** sets out our new approach to Safety and Security controls, and Sanitary and Phytosanitary (SPS) controls at the border. For SPS **controls**, our approach under the **new model** will have the following three key elements:

A new global risk-based approach

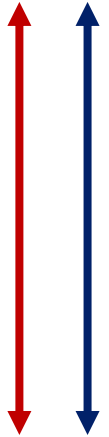
- Live animals, germinal products, products of animal origin, animal by-products, plants and plant products will be categorised as **high, medium** or **low** risk, with controls appropriately weighted against the risks posed both by the commodity and the country of origin.

Simplified and digitised health certificates

- **SPS certificates will be digitised** from 2023 depending on our trade partners' readiness. We published **simplified export health certificates** in spring 2023 for animal products and are delivering **digitised export health certificates** from 2024.

Trusted Trade Operators

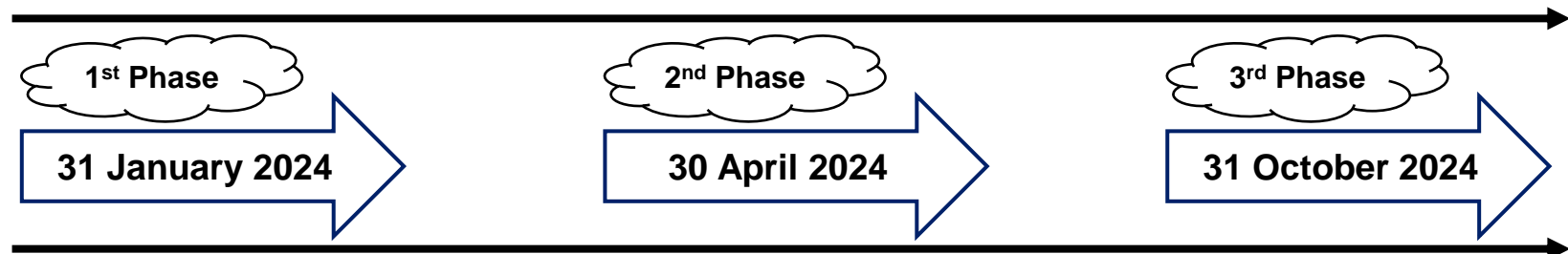
- Schemes will be piloted with industry where authorised importers of plants, plant products and certain animal products may be eligible for facilitations to make importing easier. To qualify they will need to provide enhanced assurances and evidence that they are meeting the regulatory requirements and standards.

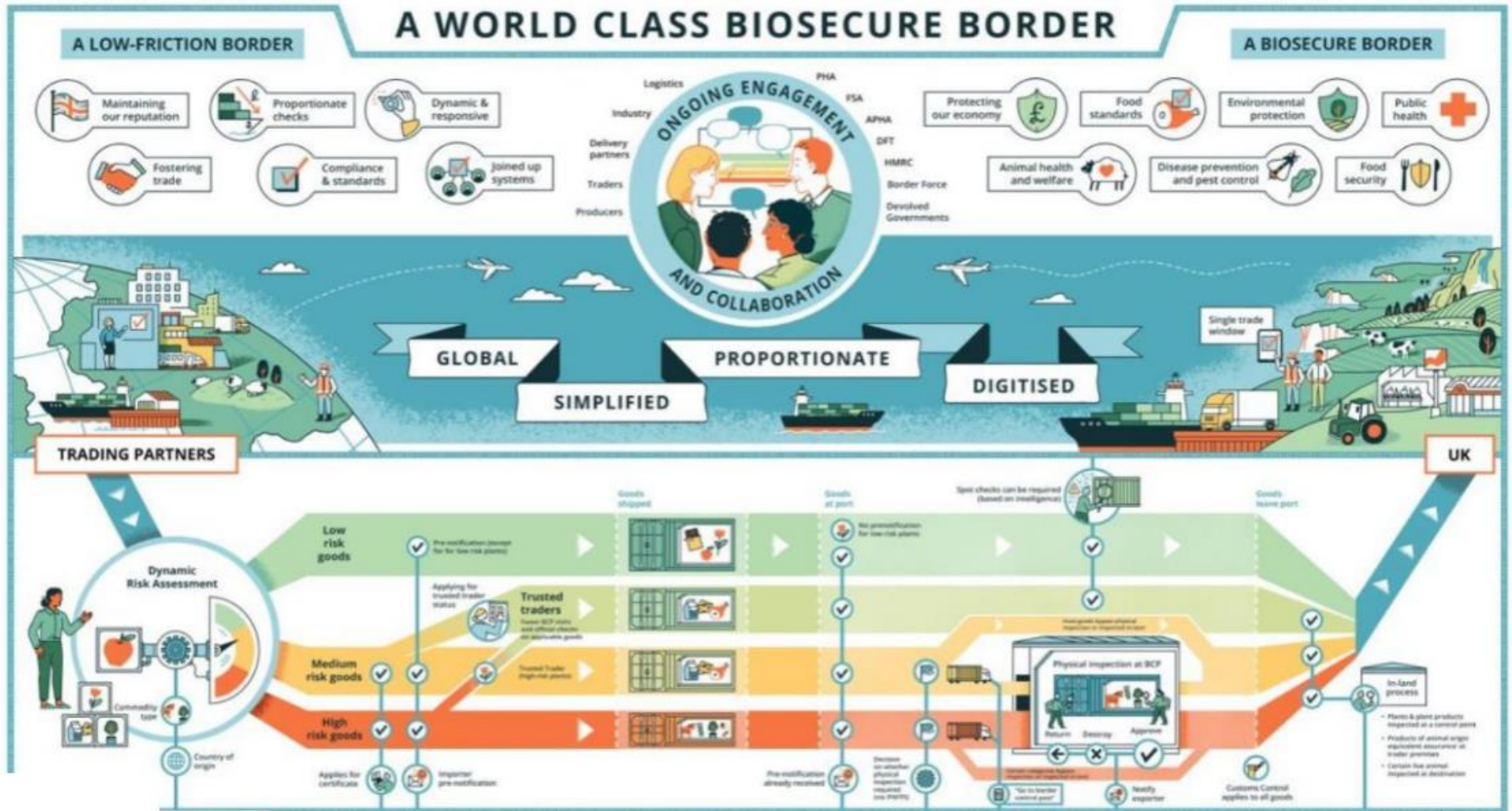




2. Timeline and requirements

- **31 January 2024** – introduction of health certifications on imports of medium risk animal products, plants, plant products and high-risk food and feed of non-animal origin from the EU.
- **30 April 2024** – introduction of documentary and risk-based identity and physical checks on medium risk animal products, plants, plant products and high-risk food and feed of non-animal origin from the EU. At this point, imports of Sanitary and Phytosanitary (SPS) goods from rest of the world will begin to benefit from the new risk-based model. Existing inspections of high-risk plants/plant products from the EU will move from destination to Border Control Points (BCPs).
- **31 October 2024** – the requirement for Safety and Security (S&S) declarations for the EU imports comes into effect. As part of this, we will introduce a reduced dataset for all imports and use of the UK Single Trade Window will remove duplication where possible across the different sets of data that must be submitted before the goods arrive in the UK – such as S&S, SPS, and pre-lodged customs data.





***Components of the SPS regime:** Pre-notification, Health Certification and Identity/Physical Checks



3. Engagement and resources



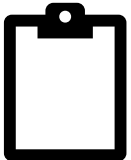
- **BTOM on-line webinars**

The UK Department of Agriculture and Environment (DEFRA) launched a series of training webinars with preparatory activities for businesses. This on-line training consists of a series of sector specific webinars for the EU public. Nowadays, all the webinars are available at Eventbrite and YouTube.



- **CO Border Enquiries Mailbox**

Separately, Cabinet Office (CO) provides stakeholders with an e-mail address to contact expert team directly to resolve queries from industry. The e-mail address is: border.enquiries@cabinetoffice.gov.uk



- **DEFRA Trader Readiness Survey**

DEFRA launched a public survey on the new GB Import Controls for EU stakeholders special feedback.



- **HMG Additional communication assets**

Based on the survey analysis, we decided to provide additional information and guidance to EU stakeholders. UK government published a set of communication assets to support the readiness of traders.



British Embassy
Madrid



The Border Target Operating Model

Presented to Parliament
by the Secretary of State for Cabinet Office
by Command of His Majesty

August 2023

Thank you



Other additional support DEFRA has for traders



Online training sessions

➔ [Importing animal products from the EU to GB: New CHED Part 1 notification Tickets, Thu 11 Jan 2024 at 14:00 | Eventbrite](#)

➔ [Prepare for the upcoming import controls from Jan'24 \(plants focused\) Tickets, Tue 16 Jan 2024 at 14:00 | Eventbrite](#)

➔ [BTOM: What does this mean for exports from Ireland? Tickets, Wed 17 Jan 2024 at 11:00 | Eventbrite](#)

➔ [Importing HRFNAO via the EU to GB: the new CHED Part 1 notification Tickets, Thu 18 Jan 2024 at 14:00 | Eventbrite](#)

➔ [Border TOM: Prepare for import controls from 31 Jan 2024 \(animal products\) Tickets, Wed 24 Jan 2024 at 11:00 | Eventbrite](#)

➔ [Prepare for the upcoming import controls from Jan'24 \(plants focused\) Tickets, Tue 16 Jan 2024 at 14:00 | Eventbrite](#)

Border Control Post Leaflet

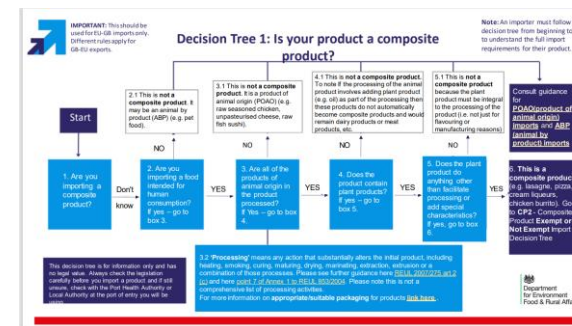
[BCP leaflet version 3 \(publishing.service.gov.uk\)](https://publishing.service.gov.uk)



This document is for businesses that import plants and plant products to Great Britain. It explains what happens when your goods are checked at a border control post.

Composite Product Decision Tree

[Defra Composite-Products-Decision-Trees-Leaflet.pdf \(publishing.service.gov.uk\)](https://publishing.service.gov.uk)



These decision trees are for businesses that import food from the EU to Great Britain. They help you check whether your product is:

- a composite food product
- subject to official controls at a border control post

Other additional support DEFRA has for traders



! All leaflets and trader guidance in one place.

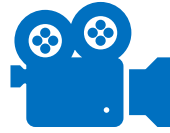
[Border Target Operating Model: information leaflets for businesses](#)
- GOV.UK (www.gov.uk)



Interactive Border Control Post Maps

[Live animals, animal products and food and feed of non-animal origin border control posts \(BCP\) in the UK](#)
- [Google My Maps](#)

[BCP Locations and Map - UK Plant Health Information Portal](#)
(defra.gov.uk)



Recordings of previous webinars



[BTOM: What does this mean for the horticultural sector?](#)
([youtube.com](https://www.youtube.com/watch?v=WellHeater)) WellHeater - UK - V6
([youtube.com](https://www.youtube.com))



[BTOM: What does this mean for the fresh produce sector?](#)
([youtube.com](https://www.youtube.com))



[BTOM: What does this mean for the meat and poultry sector?](#)
([youtube.com](https://www.youtube.com))



[BTOM: What does this mean for the dairy sectors?](#) ([youtube.com](https://www.youtube.com))



[BTOM: What does this mean for the animal by-products sector?](#)
([youtube.com](https://www.youtube.com))



[BTOM: What does this mean for live animal sectors?](#)
([youtube.com](https://www.youtube.com))



[BTOM: Authorised Operator Status \(AOS\) proposal](#)
([youtube.com](https://www.youtube.com))



[Importing Plants and Plant Products to GB through a Border Control Post \(BCP\)](#)
([youtube.com](https://www.youtube.com))



[BTOM: Prepare for the upcoming plant health import controls from January 2024](#)
([youtube.com](https://www.youtube.com))



[BTOM: Prepare for changes to border checks from 30 April 2024 for import of plants & plant products](#) ([youtube.com](https://www.youtube.com))



[Border Target Operating Model \(BTOM\): Get ready for 30th April Import Controls: Animal Products](#) ([youtube.com](https://www.youtube.com))



**We want to
hear from you!**

Tell us how your readiness preparations for the BTOM are going by joining the BTOM Trader Readiness Survey

[Trader Readiness Survey \(sharepoint.com\)](https://sharepoint.com)



**Do you want to
hear from us?**

You can join our newsletter [here](#).